

# Cell Charging ELCURE Therapy

---

Young Ki Shim M.D., Ph.D.

Yonsei S Clinic  
Seoul, Korea

# Introduction

---

**Dr. Young Ki Shim  
&  
YONSEI S CLINIC**

# Young ki Shim M.D., Ph.D. CEO 심영기 沈荣基 代表院长简历

- Director of Yonsei S Clinic, Seoul, Korea
- 1979 M.D. graduated Yonsei Medical University
- 1979-1984 trained National Medical Center, plastic surgery
- 1984 Specialist of [the plastic surgery](#) 성형외과 전문의
- 1990 Ph.D. Yonsei University “microvascular sleeve anastomosis” 연세대학교 의학박사
- 1984-1992 staff, National Medical Center, plastic surgery mainly did microvascular operation, burn scar, cleft lip
- 1989 rotating professor. Uppsala University, Sweden 스웨덴 교환교수
- 1995 rotating professor. Eduardus Krankenhaus, Germany 독일교환교수
- 2001 founder. [Korean Society of Phlebology](#) 대한정맥학회 창립
- 2000 open China Dalian 2000, Beijing 2006, SK Clinic for varicose veins 중국 대련, 북경 SK 병원 설립
- 2008 microvascular lymph node graft to Lymphedema [Lymphology](#) 림프부종 치료, 연세SK병원 설립
- 2010 stem cell therapy 줄기세포치료
- 2017 invented ELCURE Regen Therapy 엘큐어 리젠요법 [Pain medicine](#) 창시



Main Treatment : Varicose Veins, Lymphedema, Stem cell therapy, Chronic pain treatment

하지정맥류 림프부종 줄기세포재생의학 난치병치료 만성통증치료

# Subject: **ELCURE** Therapy

---

ELCURE: electric cure = HOATA Regen: high voltage operating a-current treat application

No **SAD** therapy = ELCURE

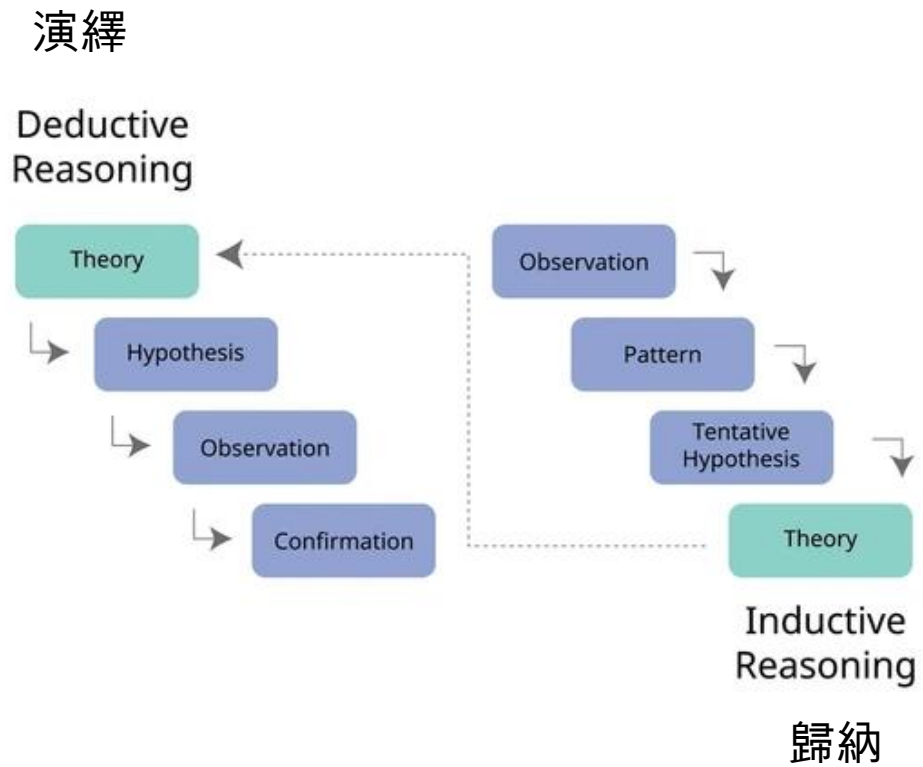
- No **S**teroid, No **s**urgical operation
- No **A**nalgesics, no opium
- No **D**rugs
- **Auto healing** by your cells themselves. By the aid of electrical cell charging likewise cellular phone.
- Dr.Shim developed this therapy based on the **electrophysiology**

# Table of contents

---

1. Cell electricity
2. Why sick ? Patho-electro-physiology
3. What is lymph sludge?
4. What's meaning of ELCURE?
5. Effects of microcurrent therapy
6. Action of ELCURE therapy
7. What's the difference between conventional electro physiotherapy & ELCURE ?
8. ELCURE Diagnosis - Dr.Shim's theory
9. Indications of ELCURE therapy
10. How to do ELCURE therapy
11. Case Study
12. Summary

# Dr Shim' theory

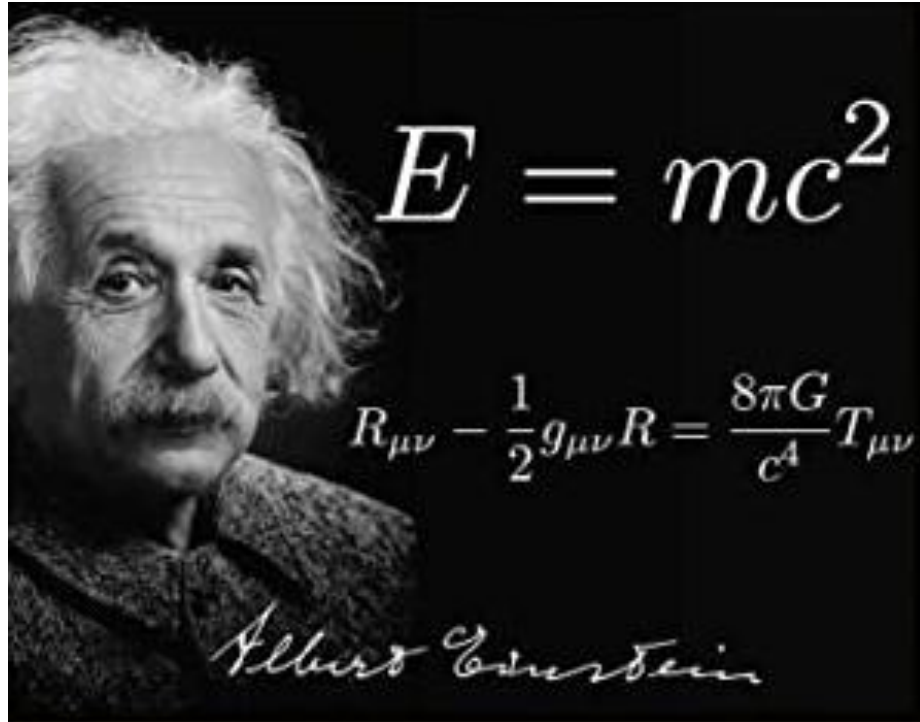


- Human cell charging
- Lymph sludge
- Electrofriction
- Electrotraction

# 1. CELL ELECTRICITY

# Everything is **energy**.

---



- **Everything is energy. This is not philosophy. This is physics.**

By Albert Einstein

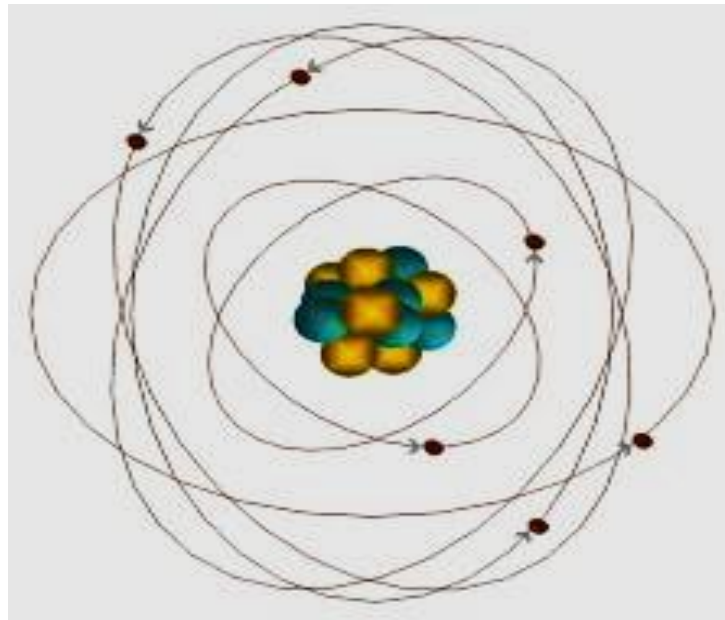
- the human body comprises **matter and energy**. That energy is both electrical (impulses and signals) and chemical (reactions).



# Composition of human body: number of cell 60~100 trillion

---

atoms – molecules - macromolecules – organelles  
– **cells** – tissue – organ – organ systems – organism



energy

electricity

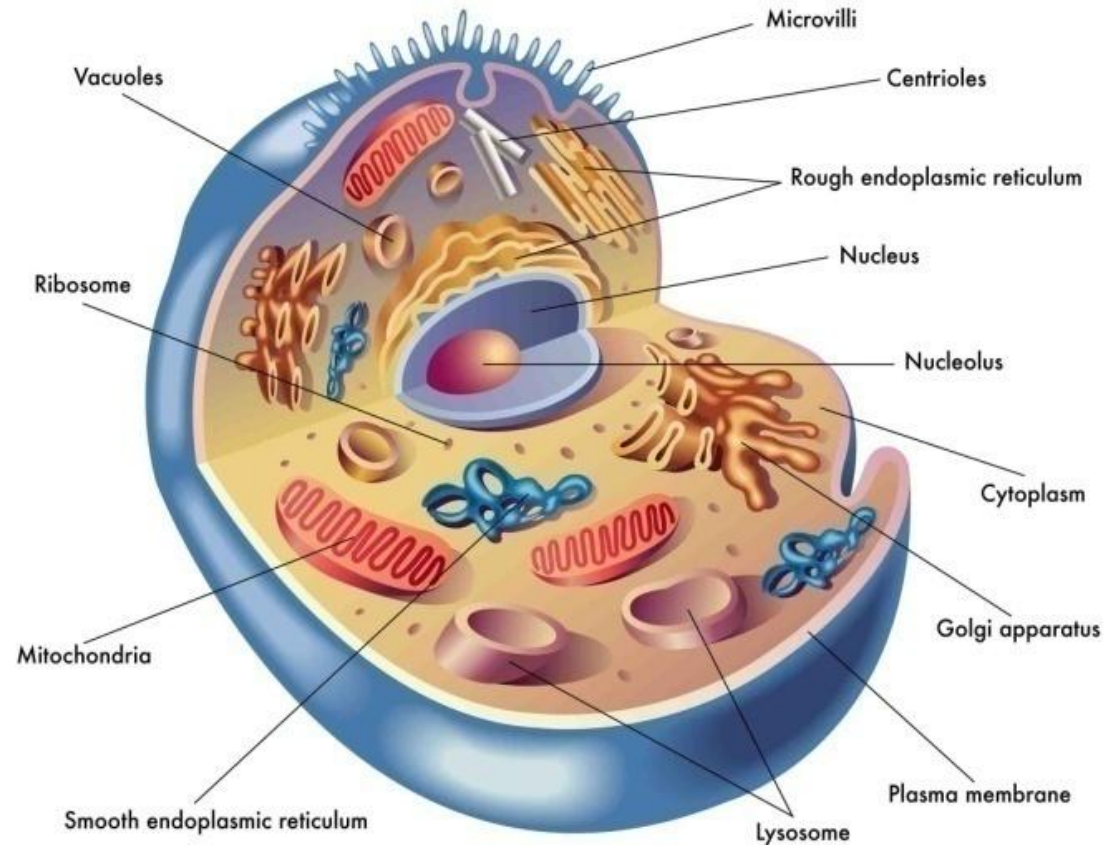
live or let die

# one cell is one universe

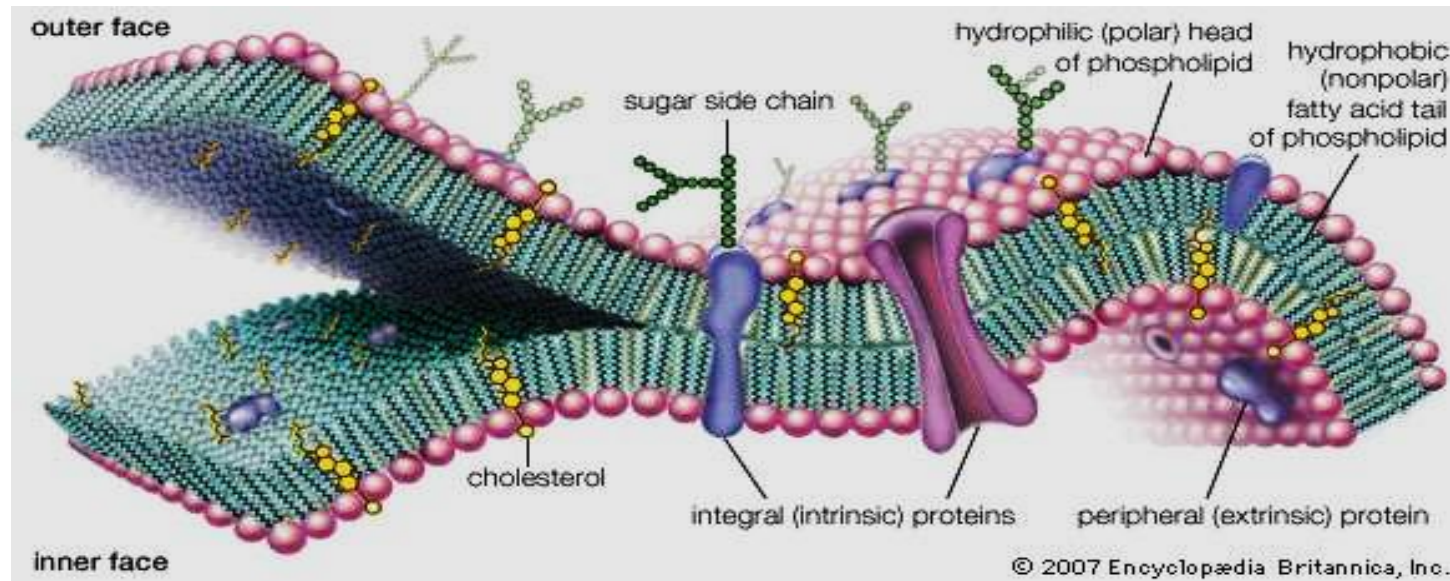
## Cell biology

for normal cell function,  
**energy** is crucial

*“A single living human cell performs over 50,000 different biochemical reactions. It carries in the DNA molecule billion bits of data (survival know how). This DNA molecule contains around 100,000 genes, of which 5000 are actively producing around 5,000 different proteins.*



# Cell membrane

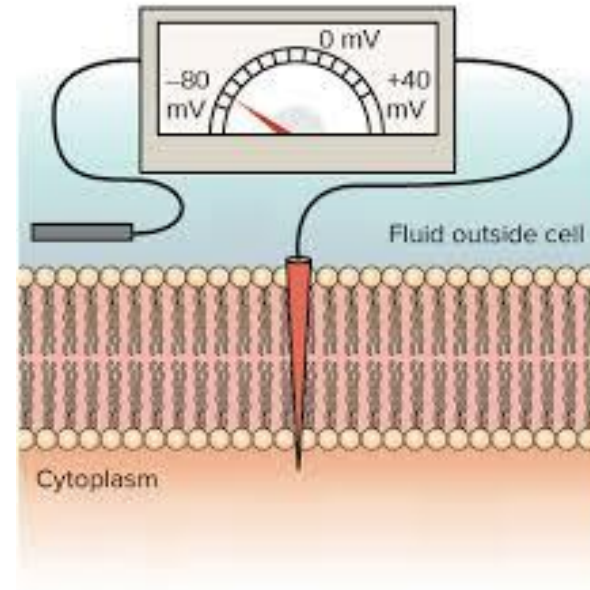


cell membranes act as **electrical condenser**



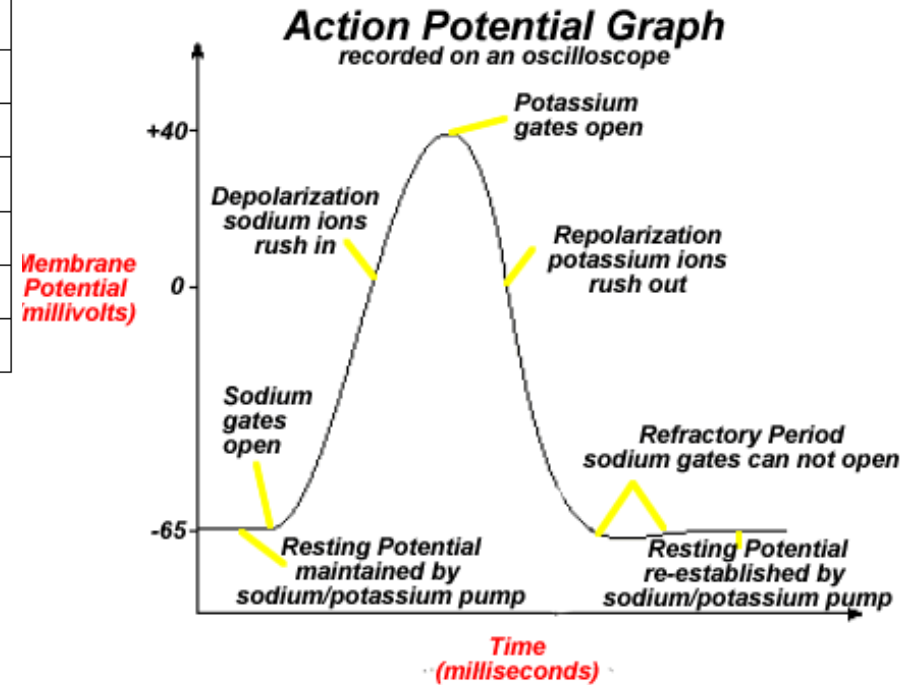
# Resting membrane potential

- 70~-100 mV : normal cellular voltage
- 90~-100 mV : heart cell voltage
- 30~-50 mV : cellular activity decrease  
start to feel pain  
decrease capillary circulation  
chronic illness / chronic fatigue
- 15~-20 mV : cancer / cell death



# Action potential

Cell Type	Resting Membrane Potential (mV)	Excitable?
Skeletal muscle cell	-90	Yes
Neurone	-70	Yes
Smooth muscle cell	-60	Yes
Photoreceptor cell	-40	Yes
Erythrocyte	-8.4	No
Chondrocyte	-8.0	No

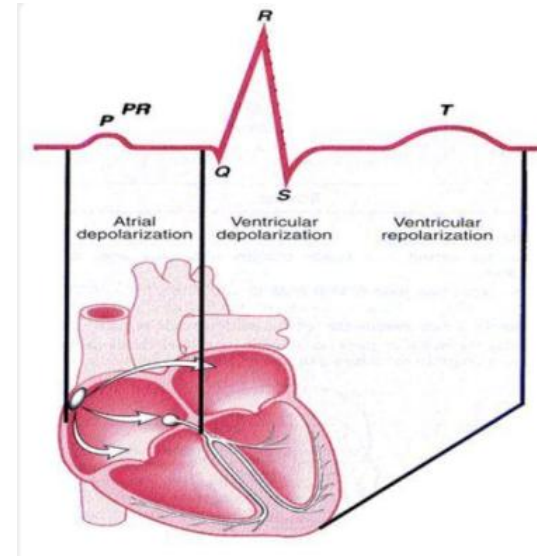


EXCITATION : muscle, nerve, eye, , , ,

In 1963, [Alan J. Hodgkin](#), [Andrew F. Huxley](#) and [John C. Eccles](#) won the **Nobel Prize** in Physiology or Medicine **Na<sup>+</sup> K<sup>+</sup> pump**

# Diagnostic methods using electrical measure

- Every cell activity comes from **electricity**
- Measuring electrical change when excited (**action potential**)
- Electrocardiogram (ECG or **EKG**) is a test by measuring the **electrical activity** of the heart.
- **EEG**
- **EMG**
- **Impedance meter**



- **ELCURE**
- **Objective pain detector** in near future
- Standard pain measure

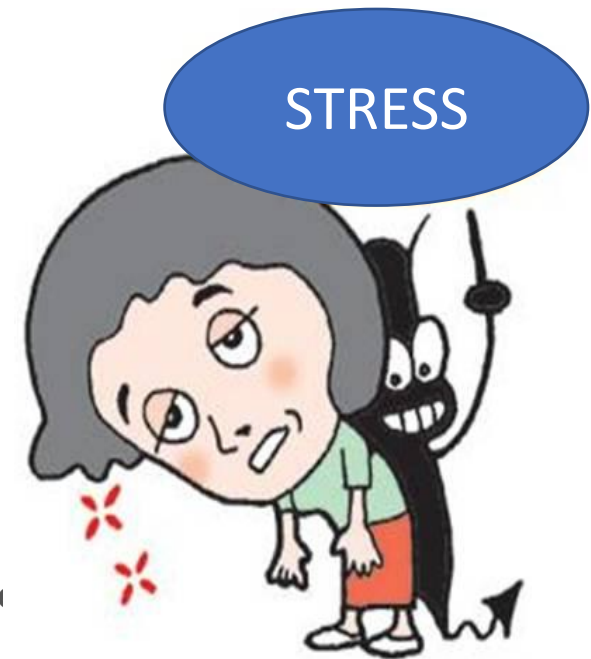
## **2. Why sick ?**

# **Patho-electro-physiology**



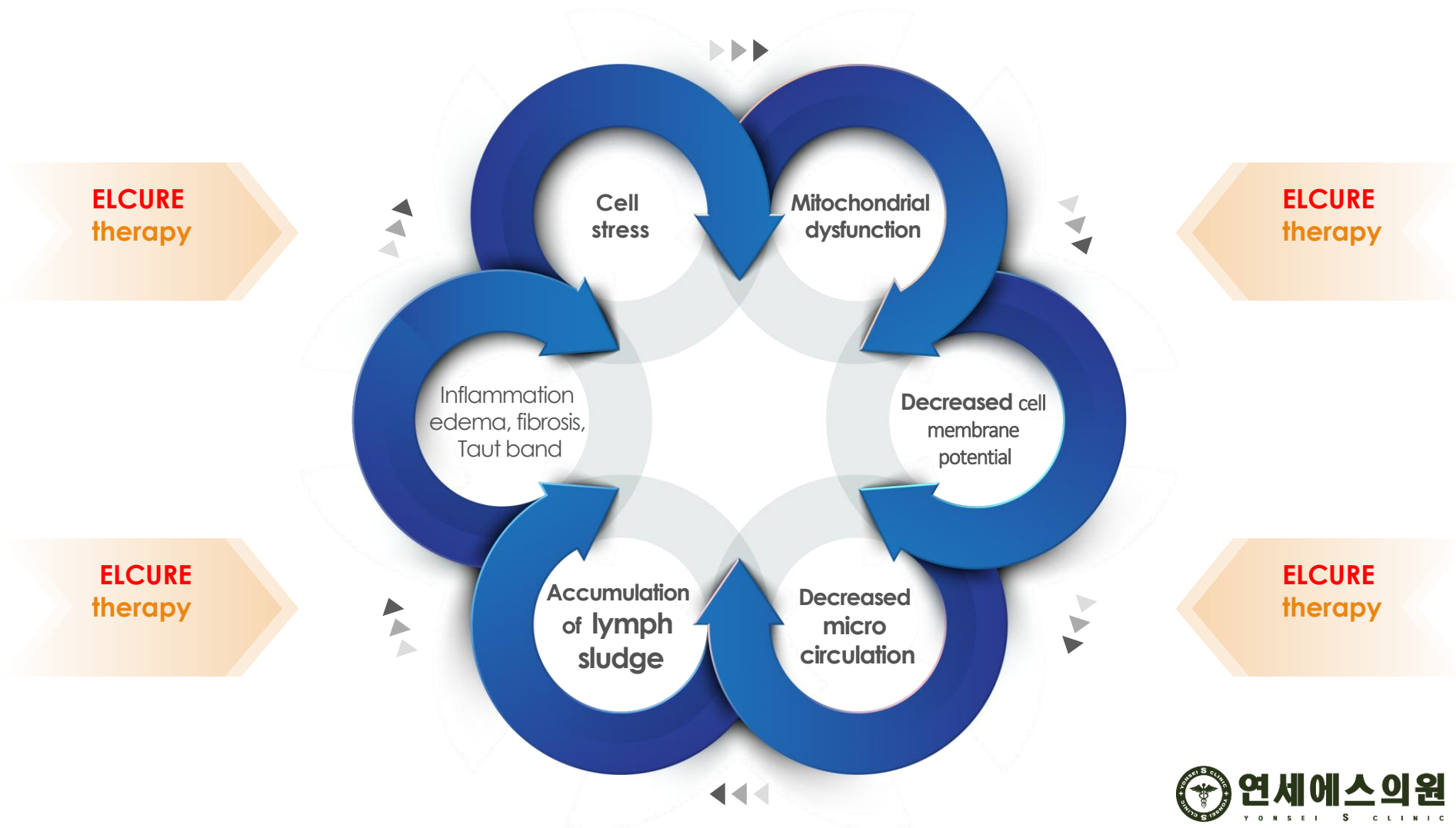
# Cell stress, Oxidative stress

- Physical(肉) : over exercise, hard labor, repeated hard work, over- or under- exercise
- Trauma: accident, surgical operation, sports injury
- Metabolic disease : hypertension, obesity, diabetes, gout, obesity, hormonal imbalance
- Cancerous condition
- Circulatory disease: CVA, Angina, Myocardiac infarc.
- Degenerative diseases: knee, hip, disc, stenosis
- Inflammatory disease: Bacterial, viral, fungal, parasitic
- Immunologic disorder: allergy, autoimmune disease
  
- Mental & spiritual : psychosis, neurosis, mental illness (靈魂)
- Habitual Addiction: alcohol, opium, drug, gambling
- Environmental: Pollution : water, air, radiation, food(GMO), noise, electromagnetic
- Genetic disorder: congenital

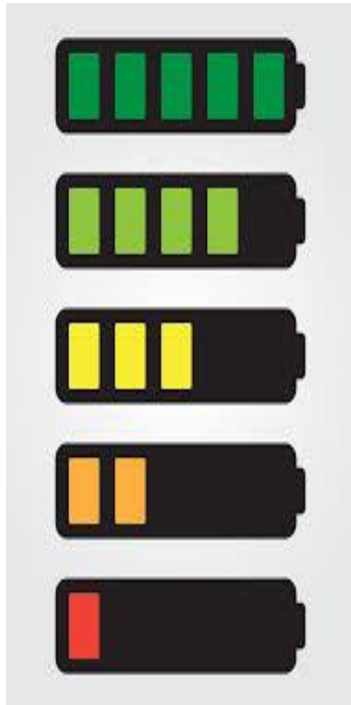




# Vicious cycle of Disease progression



# decreased resting membrane potential=discharge of cell



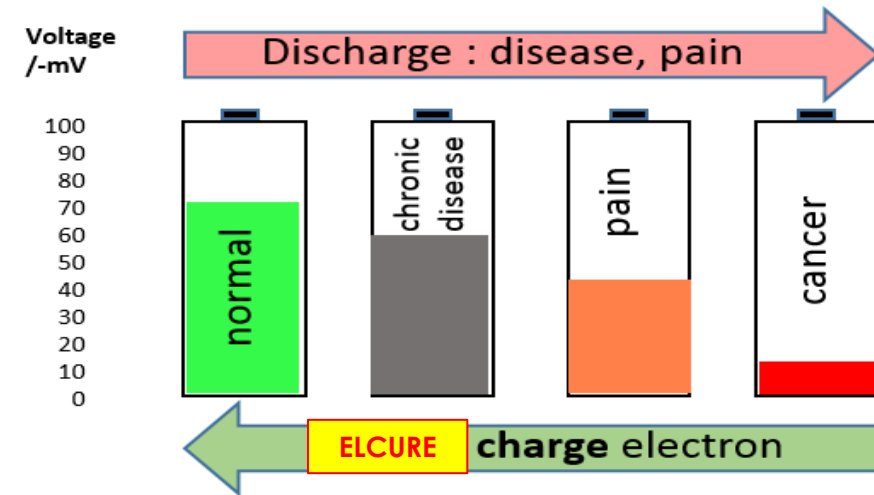
-70~-100 mV : **normal** cellular voltage

-90~-100 mV : heart cell voltage

-30~-50 mV : cellular activity decrease  
start to feel **pain**  
decrease capillary circulation  
chronic illness / chronic fatigue

-15~-20 mV : **cancer** / cell death

Cell electricity = rechargeable battery



# Energy metabolism

## Normal cell & Cancer cell

### Normal cell

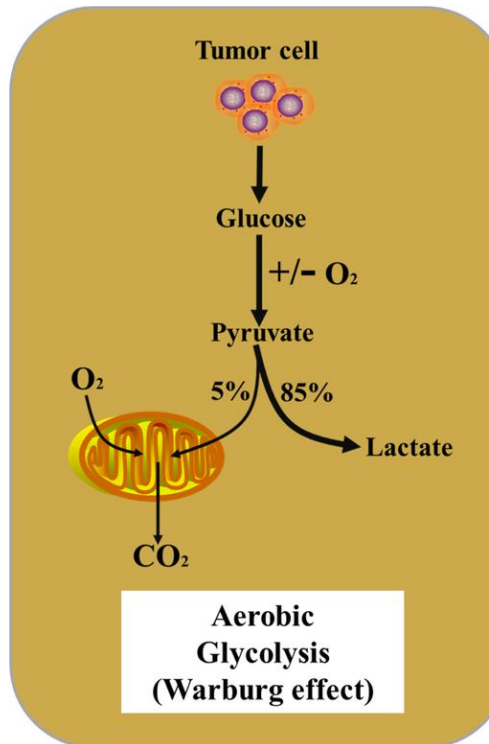
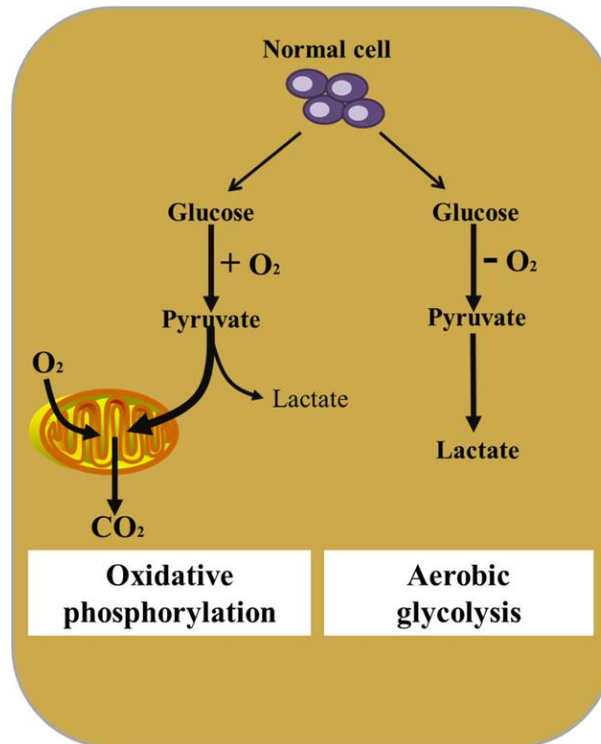
Mainly use Kreb's cycle  
O<sub>2</sub> +++

Produce **38ATP**

Slow metabolize  
Low production of Lactate

Low Glucose consumption

**Alkalinic**



### Cancer cell **Warburg effect**

Mainly use Glycolysis  
O<sub>2</sub> +/-

Produce **2ATP**

Fast metabolize  
High production of Lactate

High Glucose consumption

**Acidic**

### **3. What is lymph sludge?**

# The function of the extracellular fluid (Lymph)

- ✓ **watery environment** **ionic** composition (fluid's pH)

ion = electricity

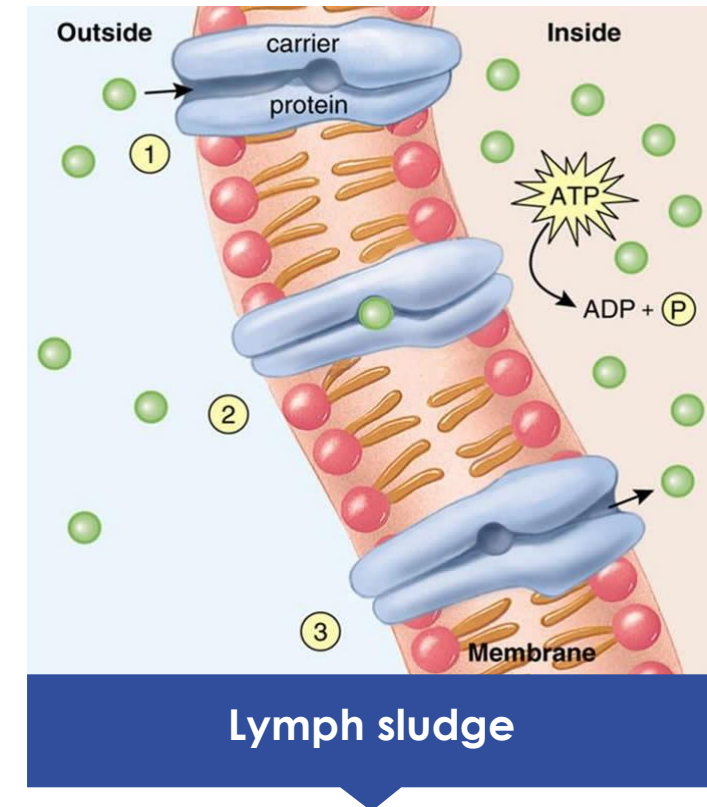
- ✓ **energy and structural metabolism from the ECF**

- ✓ **oxygen, carbon dioxide** **respiration**

- ✓ **nutrients** (e.g. glucose and fatty acids). **metabolism**

- ✓ **secrete** wastes

- ✓ **lymph : high osmolar proteinous fluid**



**Lymph sludge** : condensed high osmolar proteinous fluid, dehydrated waste products

## Lymph sludge (phlegm 痰) made by decreased cell membrane potential & microcirculation

---

### LYMPH SLUDGE

- condensed high osmolar proteinous fluid
- dehydrated **waste products**
- stagnated lymph
- high viscosity (proportional to cell discharge)
- good environment to pathogen, bacteria, virus, fungus

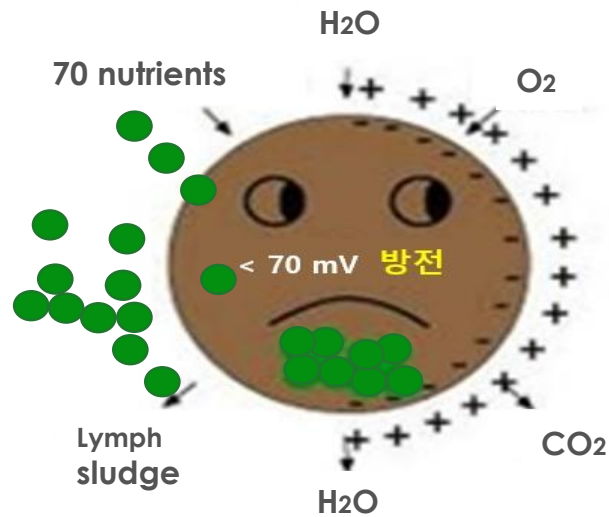
**lymph sludge → acts as electrical insulation i.e cellular communication blocked**

**Disease= 'dis' + 'ease'**  
**Disease= collection of lymph sludge (phlegm)**

## Lymph sludge (phlegm 痰) made by decreased cell membrane potential & microcirculation

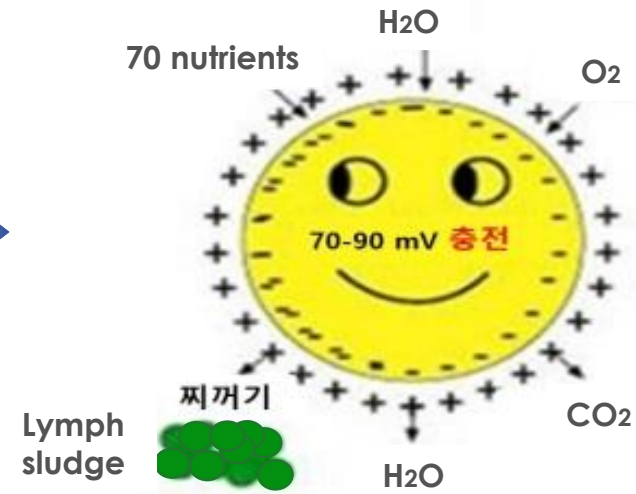
cell discharged

Low voltage



full charged

High voltage



# Symptoms & signs of low voltage

There're more than 250 typed cell in human body.

according to the affected **cells'**  
**type and function** by low voltage,

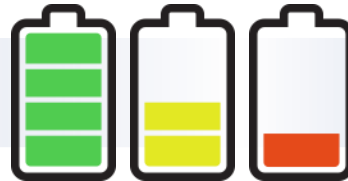
various symptoms & sign can be  
developed





# Symptoms of low voltage

Cellular  
dysfunction of  
affected organ in  
low voltage



Stress &  
low voltage  
symptoms



# Symptoms of low voltage

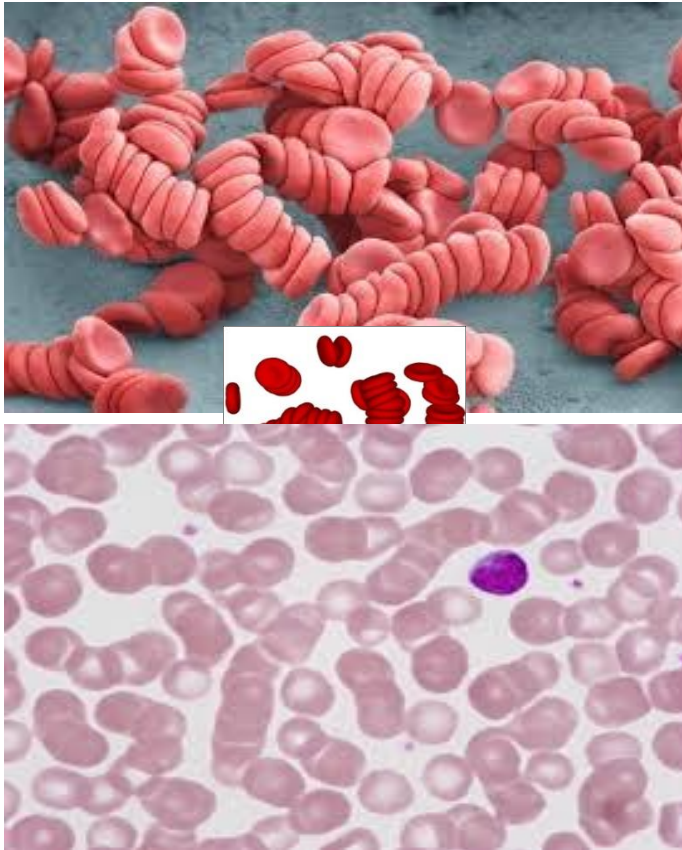
---

- Acute pain
- Chronic pain
- chronic fatigue
- headache
- nausea
- insomnia
- depression
- dizzy
- skin trouble
- indigestion
- decreased mental power
- behavioral disorder...Parkinson
- nerve palsy
- sensory change
- etc.,,,

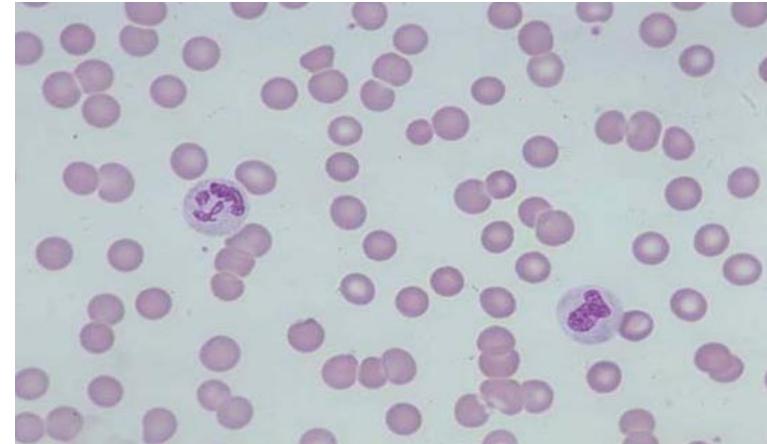
# Thrombosis develops = low electric energy

---

Rouleaux RBC = low electric energy



Normal: high energy



## 4. What's meaning of **ELCURE**?

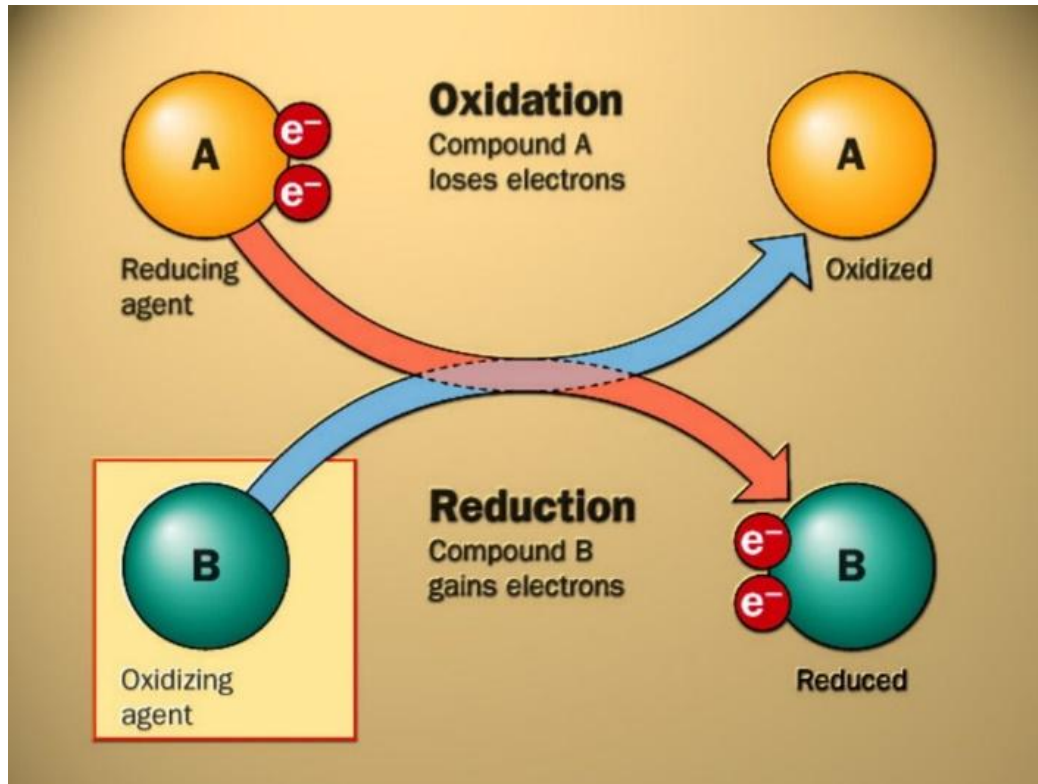
- **EL**: electricity + **CURE**: cure
- Previous name: **HOATA Regen therapy**
  - **H**igh **V**oltage **O**perating **M**icrocurrent **T**herapeutic **A**pplication

# Cell charging

put electrons to the discharged cells

산화반응(전자 失)

환원반응(전자 得)



**Oxidation**  
(loses electrons 失)

**Reduction**  
(gains electrons 得)

Oxidation stress → produce much lymph sludge

# cells are “batteries”

---

ELCURE1000 is an electrical cell charger



## **5. Effect of microcurrent therapy**

# Effect of Microcurrent therapy

## 1. thermal effect

- Joule's law  $H=I^2Rt$
- H heat I current R resistance t time
- (ELCURE- very low thermal effect)

## 2. chemical effect (ELCURE)

- redistribution of ion, iontolysis
- chemical reaction – produce new chemical composition
  - Anode :  $4\text{Na} + 4\text{H}_2\text{O} \rightarrow 4\text{NaOH} + 2\text{H}_2$
  - Cathode  $4\text{Cl} + 2\text{H}_2\text{O} \rightarrow 4\text{HCl} + \text{O}_2$

## 3. electromagnetic effect

## 4. production of ATP increase 500% in mitochondria

## 5. increase enzyme activation

DNA synthetase, citrate synthetase, 3-hydroxyacyl CoA dehydrogenase, cytochrome C oxidase, ATPase

## 6. $\text{Ca}^{++}$ ion activation in bone, nerve, muscle cell

muscle contraction, nerve excitation, regeneration of connective tissue and bone



# Effect of Microcurrent therapy

---

- 7. Edema absorption & Fluid shift
- 8. Bactericidal effect
- 9. Electrokinetic effect (TENS, ICT)
- 10. Pain modulation
- 11. Promote tissue healing

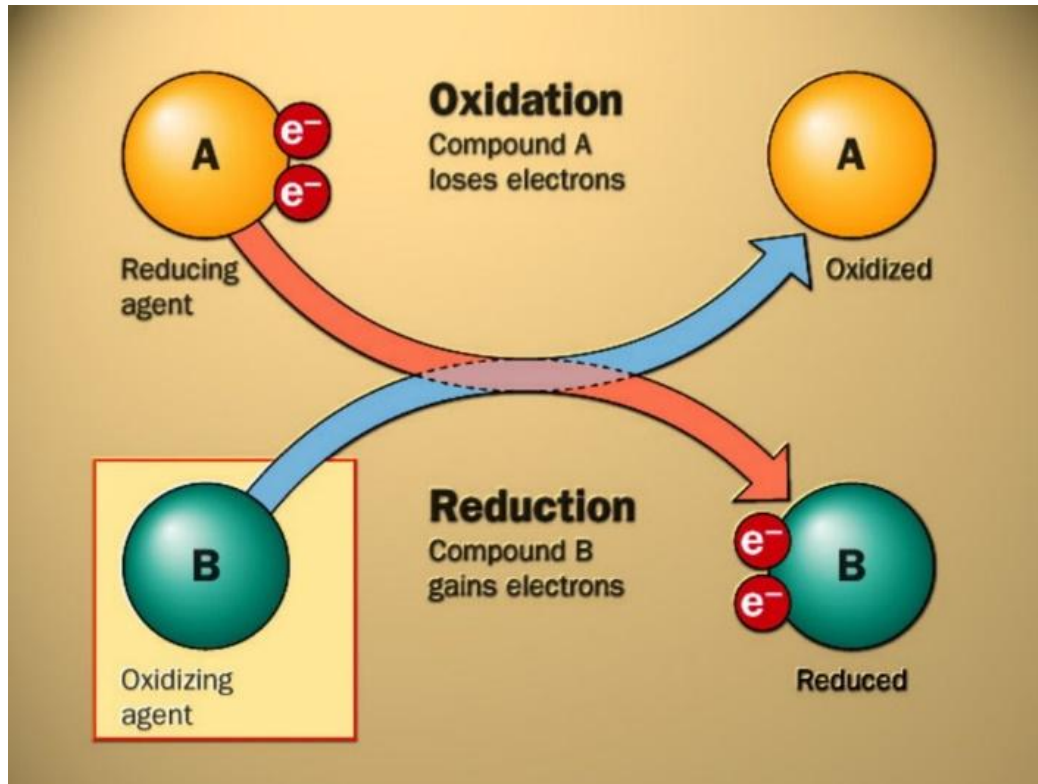
## 6. Action of **ELCURE** therapy

# Cell charging

put electrons to the discharged cells

산화반응(전자 失)

환원반응(전자 得)



## Oxidation

(loses electrons 失)

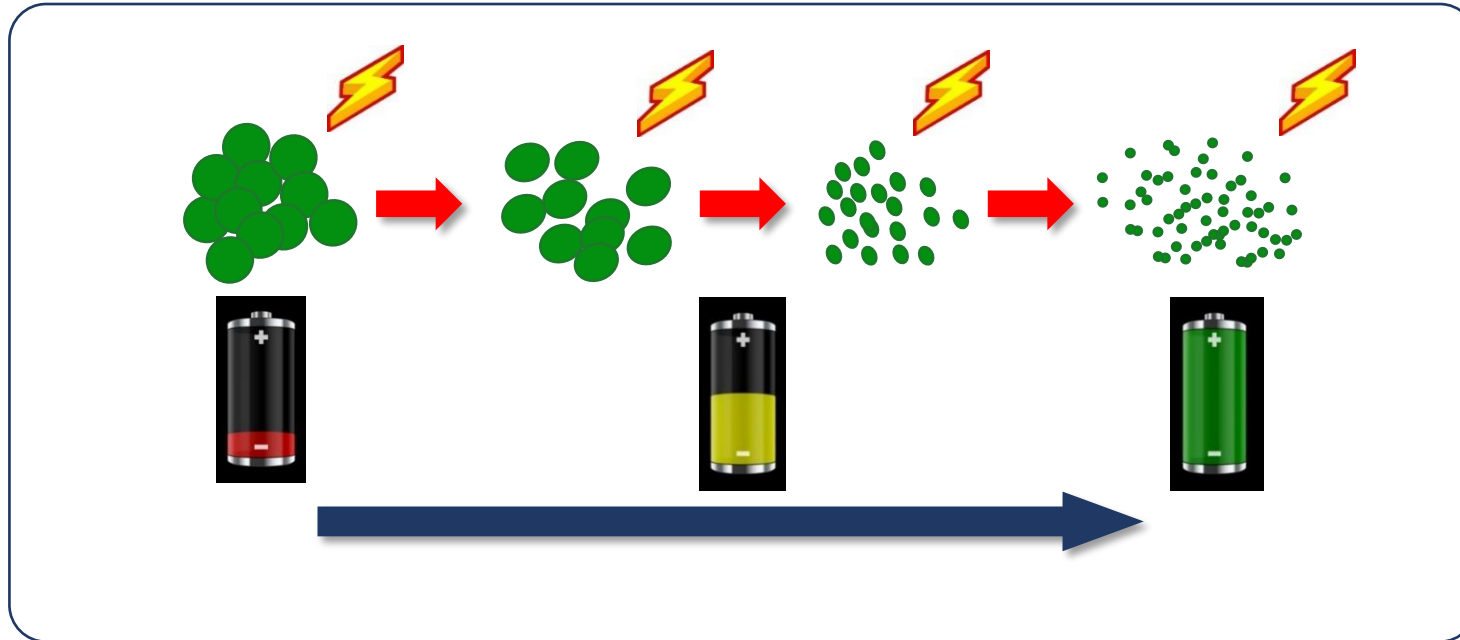
## Reduction

(gains electrons 得)

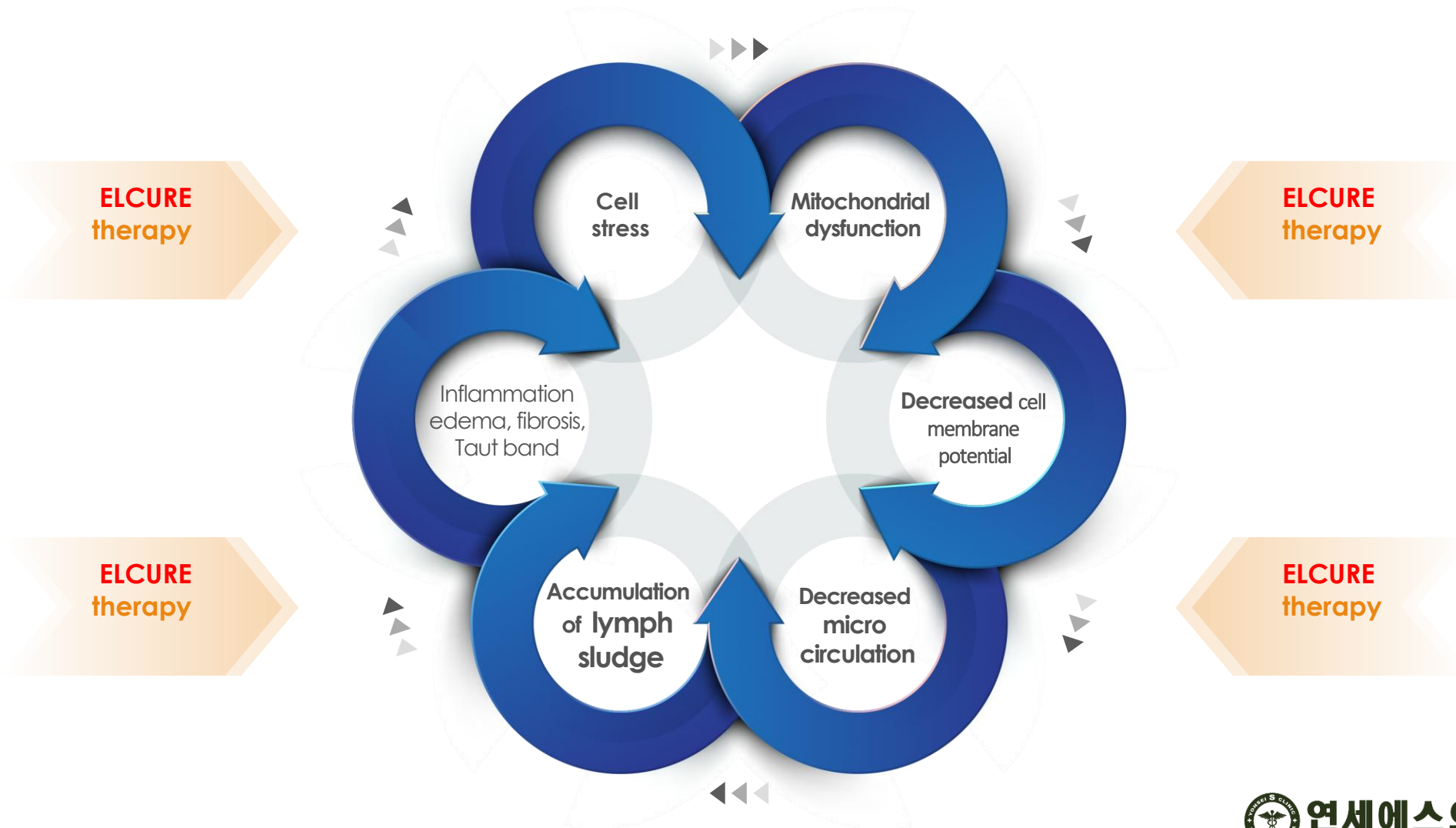
Oxidation stress → produce much lymph sludge

# Iontolysis of lymph sludge

림프 찌꺼기 분해 = 세포 충전



# ELCURE can correct many steps of disease progression



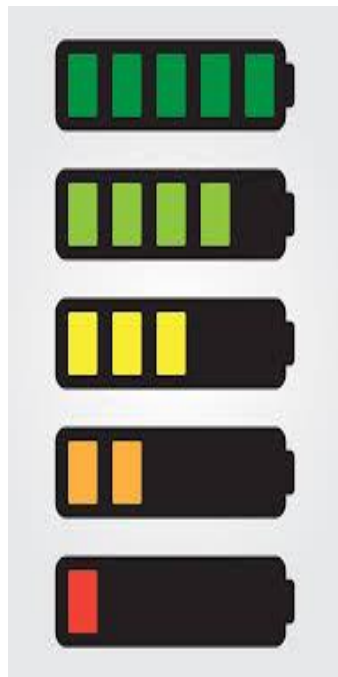
# Action of ELCURE therapy

---

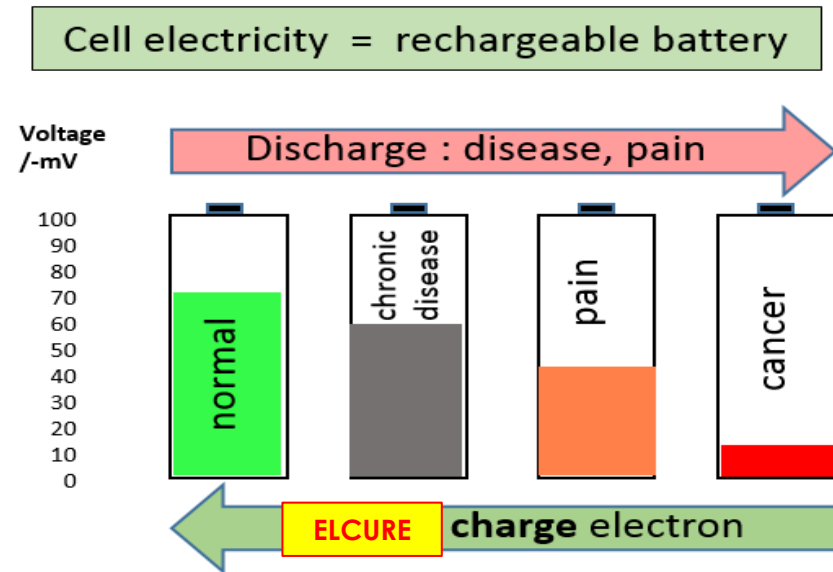
- |  |   |   |
|--|---|---|
| • mitochondrial dysfunction<br>discharging cell                                | ➡ | • production of ATP increase 500% in<br>mitochondria-- activation   |
| • decreased cell membrane potential<br>discharged cell, impaired metabolism    | ➡ | • <u>electrically cell charging</u>                                 |
| • decreased microcirculation<br>contaminated environment                       | ➡ | • enhance microcirculation  |
| • accumulation of lymph sludge<br>electrically insulated, blocked transmission | ➡ | • redistribution of ion, iontolysis,<br>melting <u>lymph sludge</u> |
| • edema<br>decreased microcirculation  | ➡ | • edema absorption & fluid shift                                    |
| • inflammation, fibrosis, taut band<br>dirty environment                       | ➡ | • bactericidal effect, fibrinolysis                                 |

# decreased resting membrane potential=discharge of cell

=> increased resting membrane potential=charge of cell

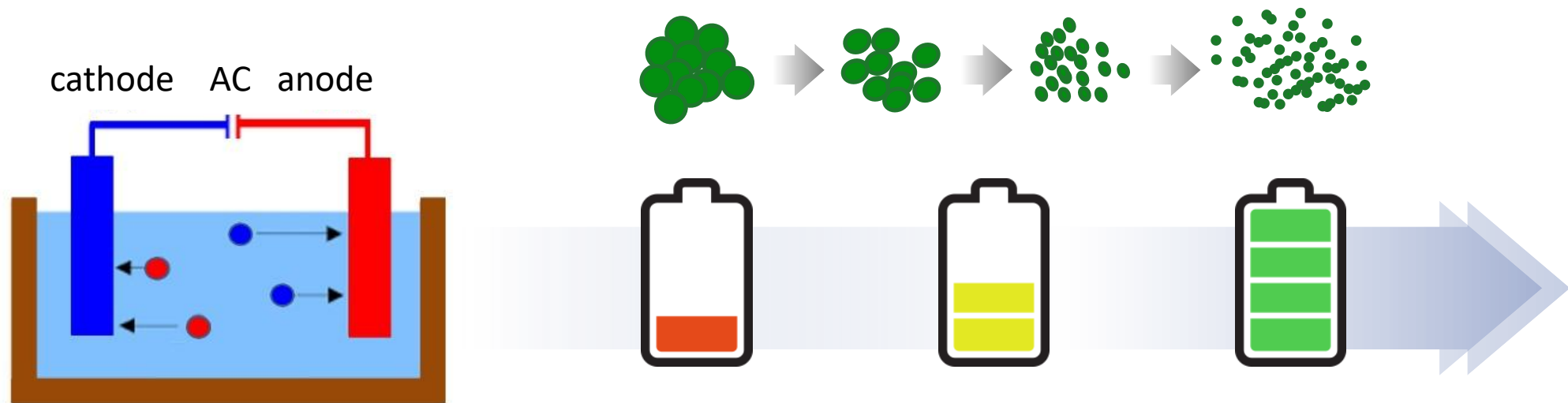


- 70~-100 mV : **normal** cellular voltage
- 90~-100 mV : heart cell voltage
- 30~-50 mV : cellular activity decrease  
start to feel **pain**  
decrease capillary circulation  
chronic illness / chronic fatigue
- 15~-20 mV : **cancer** / cell death



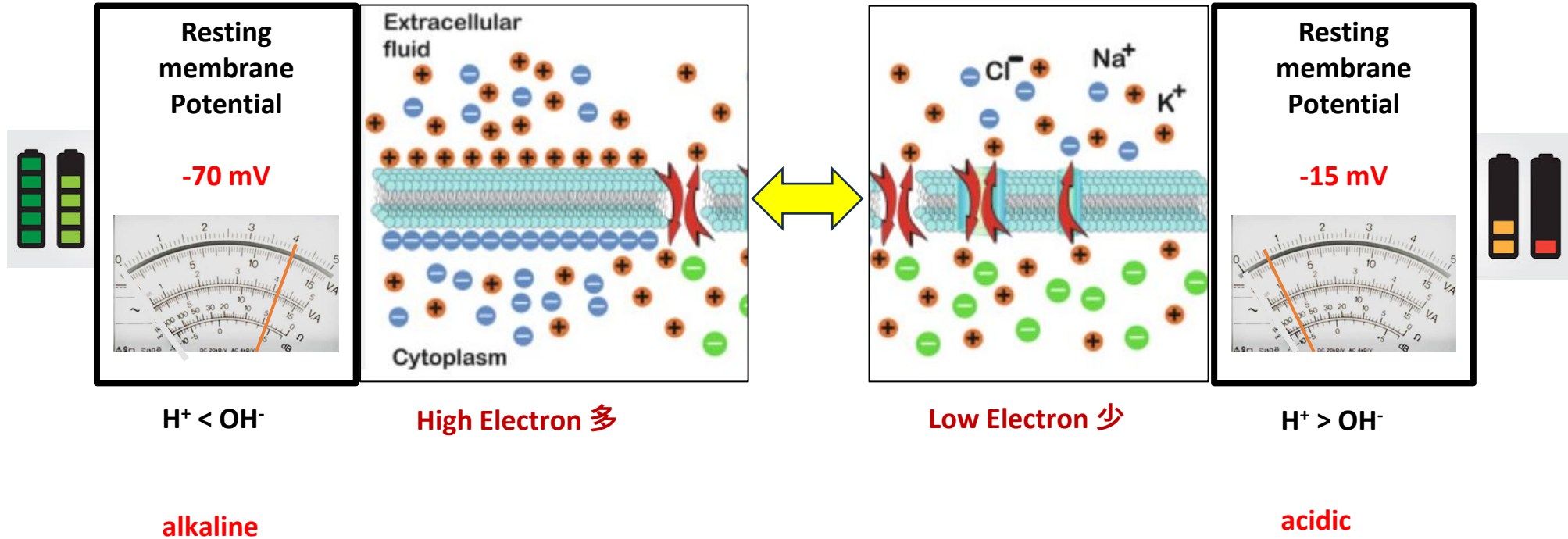
# Electric treatment

= Cell charging, Dissolve Lymph Sludge, **Iontolysis**





# Cell charge & discharge



measured BY Tennant Biomodulator® in Assess Mode. Jerry Tennant, MD

# Cell charging = Pain relief

---



7. What's the difference  
between conventional  
electro physiotherapy &  
**ELCURE** ?



# Comparison of electrical therapy devices

	Traditional method TENS & ICT	ELCURE therapy	
electricity	dynamic pulsed current	continuous sine wave current	
polarity	bipolar or 2~8 pads	unipolar	
current	50 ~ 150 $\mu$ A	~1 mA	microcurrent
frequency	4~10 KHz	60 Hz	
voltage	50~220 V p-p (500 loaded)	<b>1500~3000 V</b>	High voltage
pps	10~200 pps	60 pps	
reaction	muscle contraction	ionization	
penetration	mainly muscle level	deep to 10~15 cm	Effective to deep tissue
fibrosis therapy	no effect	good effect	
edema	no effect	very good effect	
<b>PAIN</b> control	temporal	long lasting	Longer effect
<b>ATP</b> production	inhibit	increase 500%	regeneration



# Comparison of electrical therapy devices

**target:** EMS electric muscle stimulation  
기존 사용하던 전기침, 고주파치료, TENS

- Interrupted direct current IDC DC직류
- Sinusoidal current SC AC교류
- Monophasic pulsed current MPC 맥동전류



**ELCURE** therapy = electric cell charging appliance  
**target:** everywhere **every cells**

- iontolysis of lymph sludge
- enhancement of cell regeneration
- nerve regeneration

## 8. **ELCURE** Diagnosis Dr.Shim's theory



# Electrofriction

[doctor's point of view] patented

- **Electrofriction** : friction force can be felt and heard by therapist when **the probe** was contacted & moving upon the skin(**scanning**). The *probe cannot move* smoothly when the probe is moving where the electrotraction force is strong.
- Proportional to
  - degree of **pain**
  - the degree of **discharged** amount of diseased cells
  - the volume of **friction sound** during the movement of probe upon the skin

Dr.Shim's theory



# Electrotraction

[cell point of view]

Electrotraction means the phenomena that the diseased low voltaged cells are attracting the electron by electromotive force.

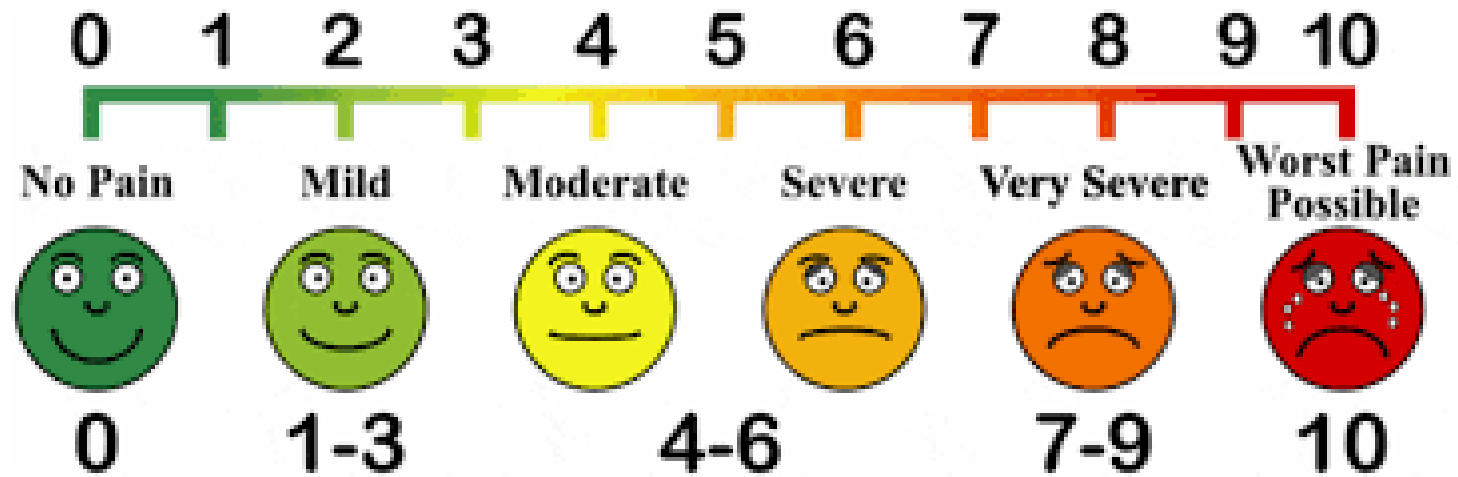
Proportional to

- degree of **pain**
- the degree of **discharged electron** amount of diseased cells



# VAS score visual analog survey

VAS (Visual analog Survey) score is degree of pain level, subjective judge by the **patient**.



<VAS score>

# ELCURE pain score

---

**ELCURE pain** score is degree of pain level, objective judge by doctors

By the degree of **electrofriction (sound, light)**

**Easy to find Trigger points**

**CT. MRI** can not find Trigger points



# ELCURE pain diagnosis

objective judge by the degree of **electrofriction sound**

Area of strong sound means discharged state & Trigger points

Area of low sound means charged state

**electrofriction sound exam. Revealed sciatica**



# Unique patented function of ELCURE diagnose the trigger points

## Patented-01 Diagnosis of pain



## Patented-02 Diagnosis & therapy of pain



## 9. Indications [ELCURE therapy]

# ELCURE therapy. Indications

---

- All sort of **PAIN**
- Fracture healing x 3 Faster
- Abdominal cramp
- Headache
- EYE : enhance vision, Macular degeneration, cataract, glaucoma
- ENT : enhance hearing, Tinnitus, Vertigo
- Increase immunity
- Adjuvant therapy of all sort of cancer
- Viral infection : HIV Herpes



# ELCURE therapy. Indications

---

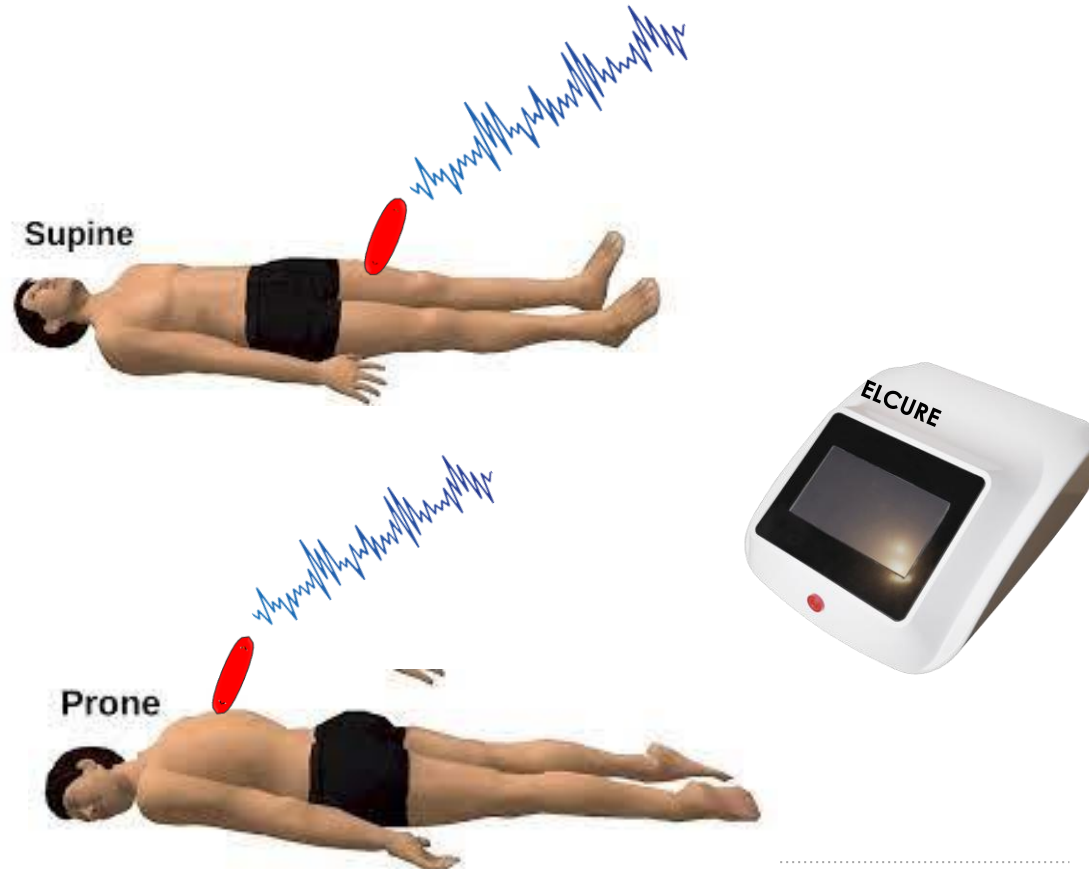
- All sort of musculoskeletal disorder
- All sort of nerve disorder : facial palsy, CVA palsy, CRPS
- Peripheral nerve regeneration
- Antiaging effect
- Enhance skin condition and skin diseases
- All kind of degenerative disease
- Lymphedema, Swelling
- Enhance survival rate of stem cell graft

# 10.How to do ELCURE therapy



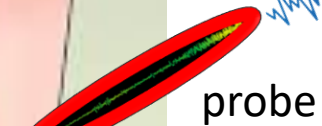
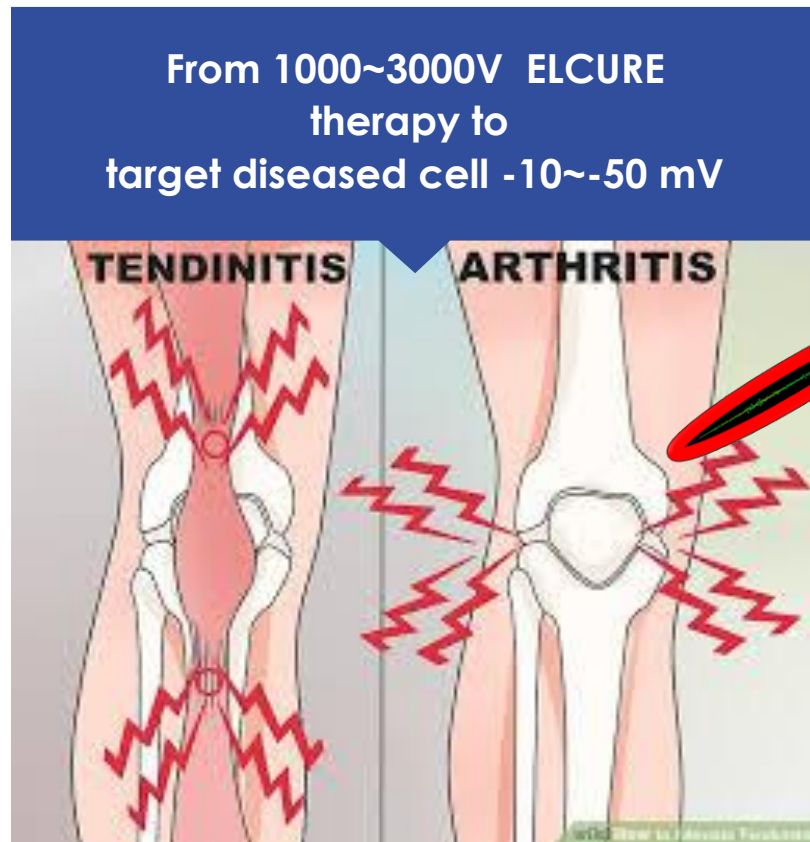
# Apply ELCURE therapy

- Let the patient supine or prone position
- Keep **dry** skin
- Keep dry air
- Keep good **insulation**
- Check the **trigger points** where the max. point of electrofriction
- Apply **ELCURE**
- **One** trigger point 1 min. till pain decrease
- **Move** another points
- Avg. Tx session : 20 ~40 min.



# Ionizing pain during charging (通電痛)

No electrothermal effect



1000~3000 V

## TARGET

### lymph sludge

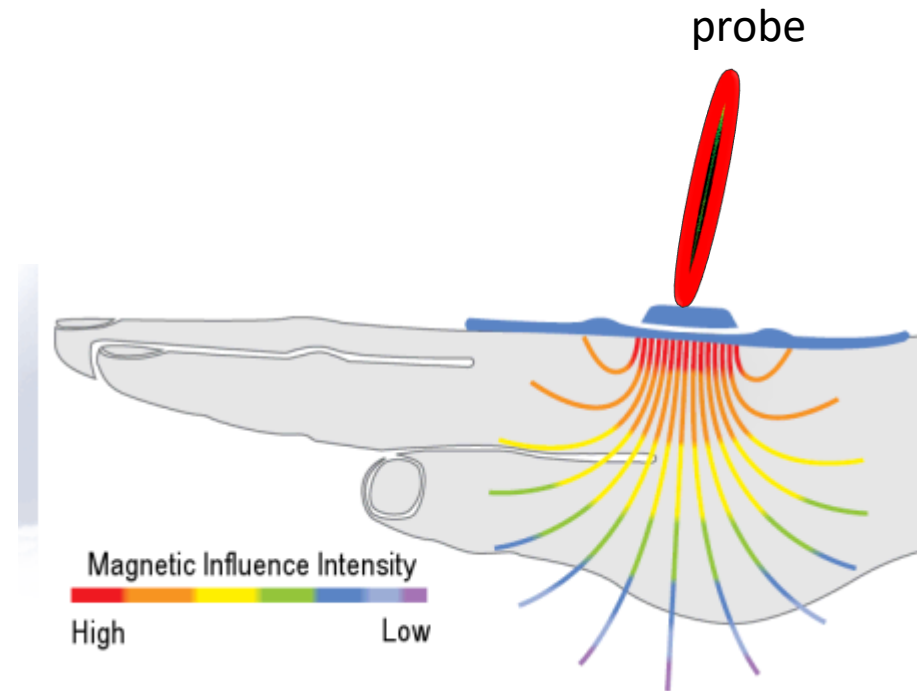
All discharged malfunctioning cells

Electrical charging via blood  
vessel, muscle, nerve  
at cellular level

# ELCURE electric charging therapy forms electric magnetic fields.

No electrothermal effect

**target :**  
**focused to the trigger**  
**points** where the  
**maximum**  
electrofriction points



# Electric treatment applying time

## Acute pain

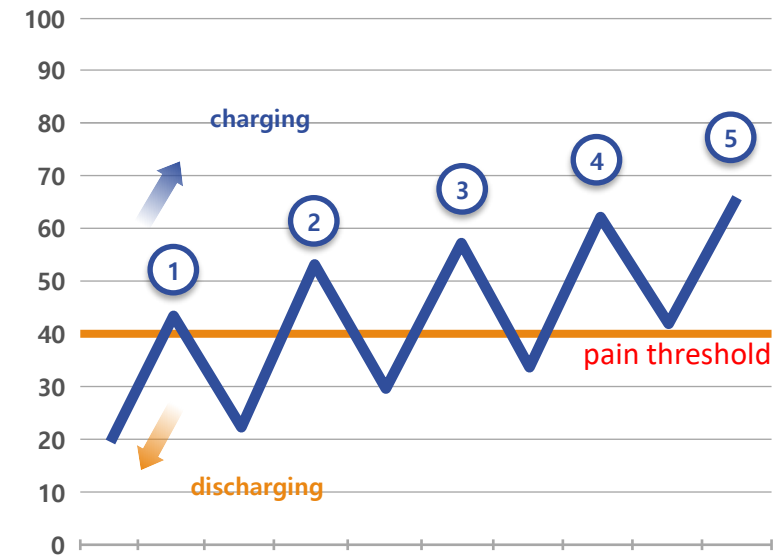
20 min, every 2-5days  
session 1-5times

## Chronic pain

20-40 min, every week  
Session more than 10 times~  
Average 30 sessions

급성통증	만성통증
10~20 min	20~40 min
2~5일에 1회	1주일에 1회
1~5 회 치료	10 회 이상 치료, 평균 30회

## electric cell charging graph



repetitive treatment is important ! Follow up therapy one session every 1~2 month

# Electric treatment applying time

## Cancer pain

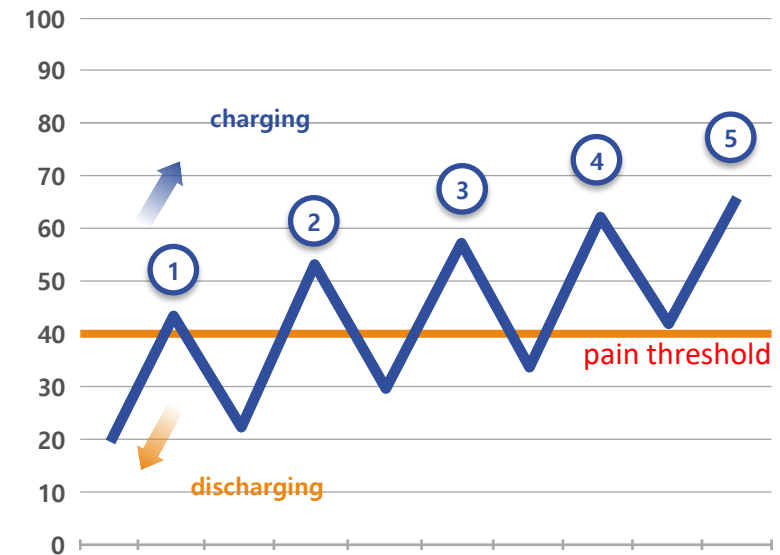
30~60 min, 3 times per day  
Everyday

## Cancer Autoimmune disease

30~60 min, 3 times per day  
Everyday

암성통증	암, 자가면역질환
30~60 분	30~60 min
매일 3회	매일 3회
지속적 치료	지속적 치료

## electric cell charging graph



repetitive treatment is important ! Follow up therapy one session every 1~2 month

# 11. Case Study

# Electro dissolution of edema

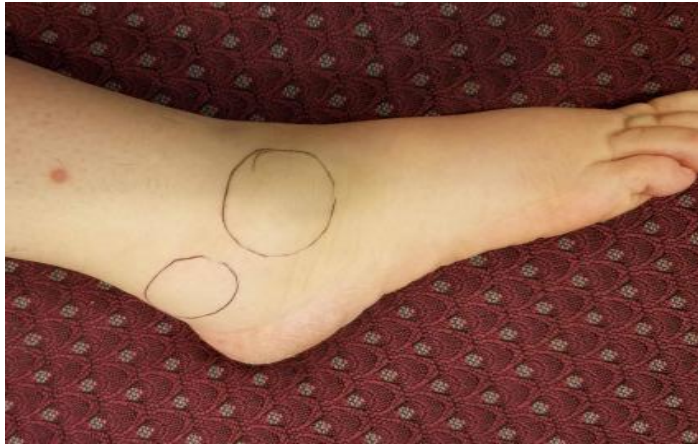
---

Electro dissolution of lymphedema  
[Lecture at Chicago 2016, USA]





# Electro dissolution of edema





# Facial palsy – Paralyzed left face

---

**BEFORE**



**AFTER**



# Diabetic foot



20180205 HbA1C 12.0



20180212 HbA1C 7.1



20180222



20180227 HbA1C 6.8



20180628 HbA1C 6.6



HbA1c  
12.0 [before]  
→ 6.6 [4months treatment]

# herpetic pain = shingles

**Acute herpetic neuralgia treated** within 1 month after 3~4 ELCURE therapy

1<sup>st</sup> day

2018.12.12



첫 치료직후 통증 95% 감소

2<sup>nd</sup> day

2018.12.14



5<sup>th</sup> day

2018.12.17 #5D



2018.12.29 #17D



대상포진 2주일 치료 완치판정



# 12. Summary

# ELCURE therapy 세포 충전 요법

---

- Effective **pain** control:
  - more **faster (x100)** and powerful effects than acupuncture
  - ELCURE has a much longer effect than TENS
- activation of **cellular regeneration**
- nerve regeneration effects
- enhance blood and lymph **circulation**
- immediate reduction of swelling
- **anti-aging** effect, enhance skin tone
- post management for **cancer** patients
- can apply incurable diseases



# Requirement of ELCURE therapy

---

- Before or during ELCURE therapy
- **Stop all medication** esp. **analgesics** except drugs for metabolic disease [except: hypertension, diabetes]
- **Avoid steroid absolutely**
- Good **insulation** during patient therapy
- Recommend Lymph detox therapy
- Recommend Alkalizing food
- Recommend MV75 patch(cell charging)





# Advantages of ELCURE therapy

---

**ELCURE** can lead your cells heal by themselves via supply necessary electricity from outside

Auto self-healing is the best cure  
No side effects

**Stop DRUGS !! Pain killer !!**  
**Avoid Steroid !!**



# ELCURE therapy medical device

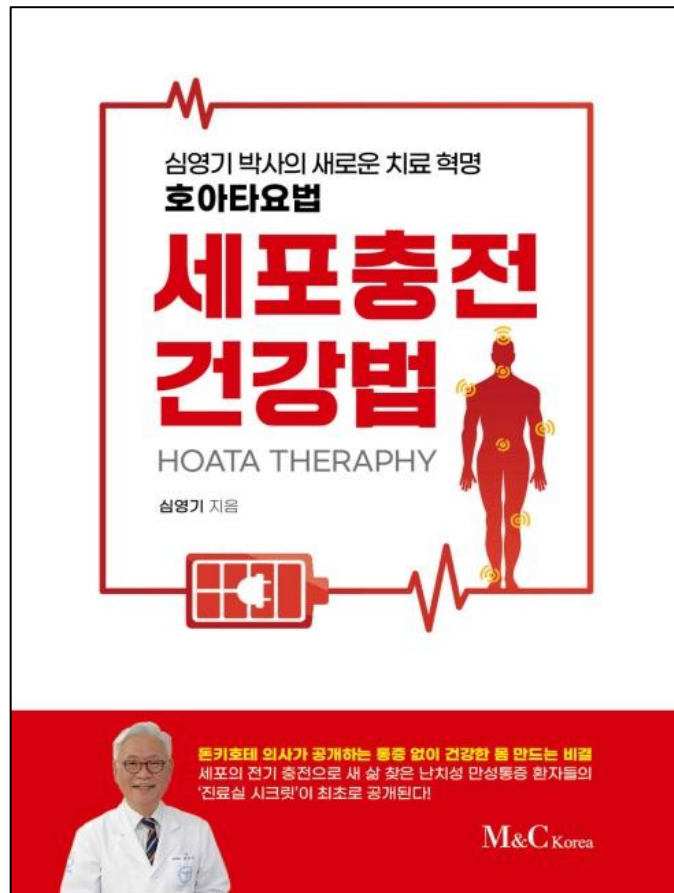
---



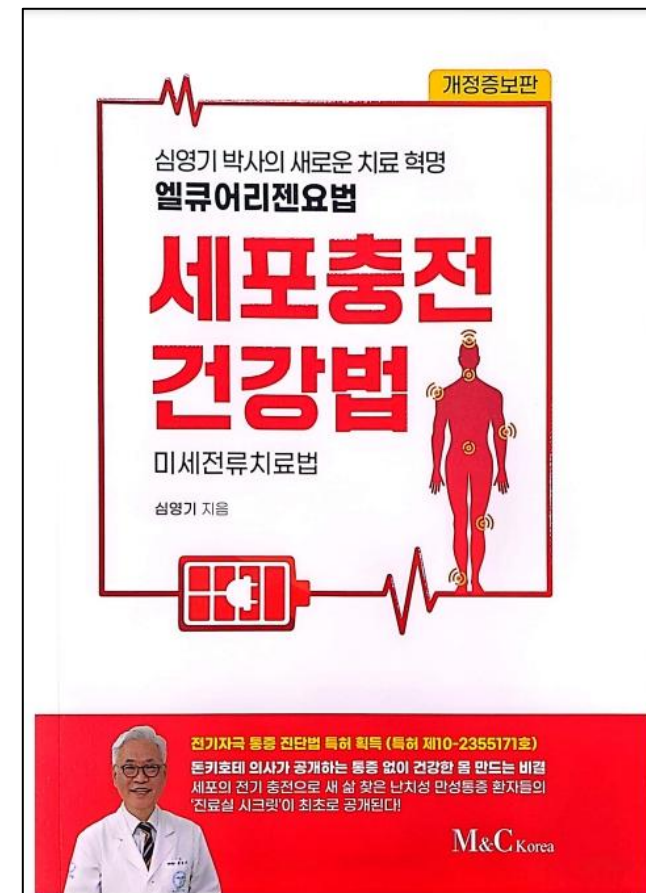


# Unique patented function of ELCURE diagnose the trigger points

Book: Cell charging health care  
written by Dr.Shim Young Ki 2022



Book: Cell charging health care 3<sup>rd</sup>  
edition written by Dr.Shim Young Ki  
2024



# Thank you for your attention

- Young Ki **Shim** M.D., Ph.D.
  - [skvein@naver.com](mailto:skvein@naver.com)
- Yonsei S Clinic. Seoul, Korea
  - <http://yssh.kr>
  - South Korea



**연세에스의원**

Y O N S E I S C L I N I C